



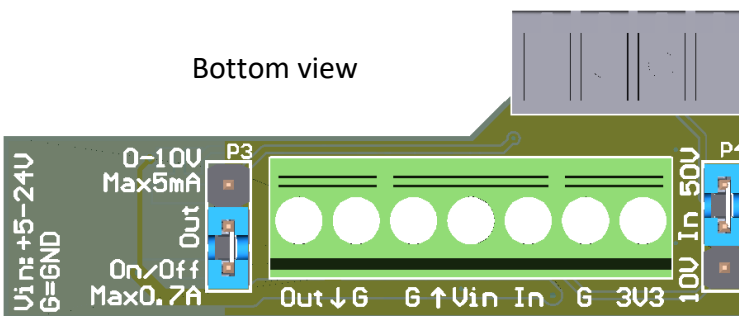
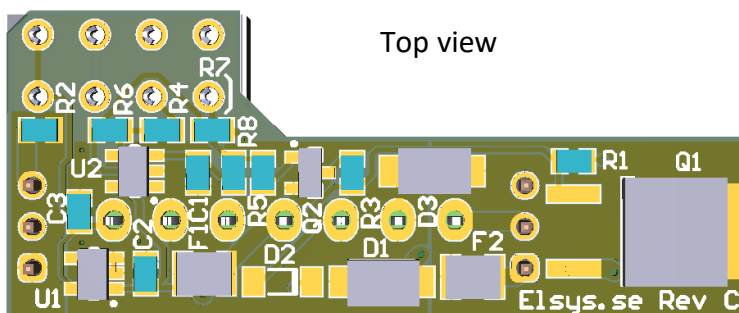
Technical Manual

EXT-Module, Rev C

EXT-module is a module that fits inside the ELT LoRa and is intended for connecting external power and actuators and be used as a class C device. It can also connect to sensors and be used as a class A device.

Features

- Connection for external power
- On/Off output
- 0 – 10 V output
- General purpose input
- Fits inside the ELT-2 box
- Powers the ELT-2
- Switching between functions are done with jumpers.



Input voltage: 5 – 24 V DC
 On/Off output: Max 0.7 A
 0 – 10 V output: Max 5 mA
 Input can be scaled to allow up to 50 V

