

ELT Series

Elsys outdoor LoRaWAN™ sensor

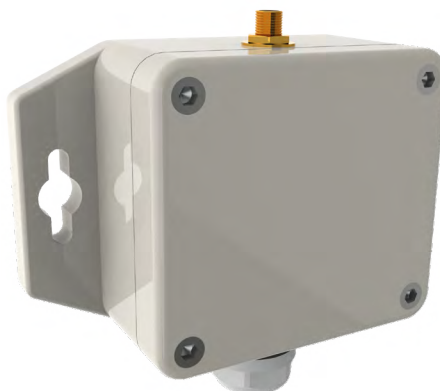


ELT-2 & ELT Lite

ELT sensors is a general LoRaWAN™ device for measuring analog or digital signals. It is enclosed in an IP65 box and is designed to be outside. A 3,6V AA lithium battery powers it. Battery life is estimated to be up to 10 years.



Now with internal antenna!



Easy to configure

All Elsys sensors are equipped with NFC (Near Field Communication) for easy configuration with an Android phone. You can change the sample rate, data rate, encryption keys, triggers, activation and much more with our application "Sensor Settings".

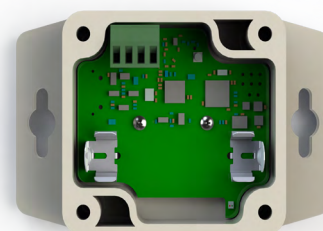
Long range sensor

ELT is the ideal sensor for measuring in advanced places or extreme weather conditions. Use together with a suitable antenna to form your solution.

Depending on the environment and choice of antenna you will discover that ELT has the capacity of measuring with remarkably long range.

Internal sensors

Inside the ELT-2 you will find four internal sensors: a temperature sensor, a humidity sensor, an accelerometer for orientation measurements and an atmospheric pressure sensor.



Use together with:

- Electricity meters
- Flow meters
- Analog sensors
- Moisture sensors
- Temperature sensors
- Water leak cable

... or another sensor of your choice!

ELT-2 and ELT Lite LoRaWAN™ sensors

ELT accessories



ELT breatheable weatherproof membrane

Makes measuring of humidity possible. Increases response time.

Distance sensor

Ultrasonic distance sensor for measuring distances up to 5m.

Meter ECH20 EC-5/10-HS

Determines volumetric water content (VWC) by measuring the dielectric constant of the media using capacitance/frequency domain technology.



ELT external temperature probe

Temperature probe for ELT sensors, 1m cable with stripped ends for easy mounting.

Half wave 915Mhz/868 Mhz antenna

A flexible hinged whip antenna with +3dBi gain.

ADC Module/External Module

Modules that fits inside the ELT-2 and are intended for connecting external professional equipment. Connect platinum sensors, load cells or control equipment of your choice.

With ELT accessories you can easily customize our products depending on your needs. Visit our webpage to read more!

Supported external sensors

ELT-2

- Analog input (0-10V)
- Pulse input (pullup/pulldown)
- DS18B20, 1-wire temperature sensor
- Switch/Button, normally open
- Digital input
- Meter 10HS, EC-5, water moisture sensor
- Water leak/sensor cable
- Maxbotix, ultrasound distance sensor
- GPS, with serial output

ELT LITE

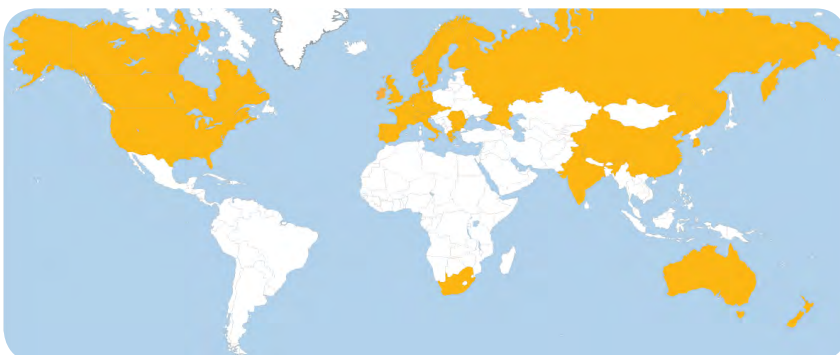
- Analog input (0-10V)
- Pulse input (pullup/pulldown)
- DS18B20, 1-wire temperature sensor
- Switch/Button, normally open
- Digital input
- Meter 10HS, EC-5, water moisture sensor
- Water leak/sensor cable

Do you miss any support for your sensor? Get in touch, we can probably solve it!

ELT-2 and maxbotix mounted



Elsys LoRaWAN™ sensors around the world



Order products
Visit our webshop!

General inquiries
info@elsys.se

Support
support@elsys.se

+46 90 100 500

Elektroniksystem i Umeå AB
Industrivägen 10
90130
Sweden