

EMS lite

Description

With a size slightly larger than an AA-battery, EMS lite can be used as an indoor temperature and humidity sensor. The small size makes it ideal for any limited surface area.

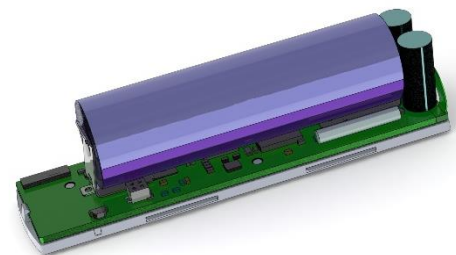
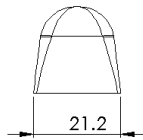
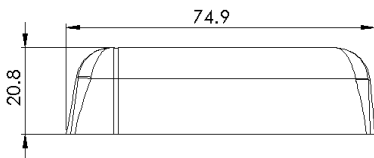


Applications

- Indoor environment measuring
- Smart buildings
- Workplace management

Product features

- LoRaWAN® Certification in progress
- Temperature sensor
- Humidity sensor
- NFC for configuration
- Configuration over the air



Device Specifications

Mechanical specifications

Weight	10 g excluding batteries / 30 g including batteries
Dimensions	21.2 x 74.9 x 20.8 mm
Enclosure	Plastic, PC/ABS

Operating conditions

Temperature	0 to 50 °C
Humidity	0 to 85 % RH (non-condensing)

EMS lite

Radio / Wireless	
Wireless Technology	LoRaWAN® 1.0.3
Wireless Security	LoRaWAN® End-to-End encryption (AES-CTR), Data Integrity Protection (AES-CMAC)
LoRaWAN Device Type	Class A/C (configurable) End-device
Supported LoRaWAN® features	OTAA, ABP, ADR, Adaptive Channel Setup
Supported LoRaWAN® regions	US902 – 928, EU863 – 870, AS923, AU915 – 928, KR920 – 923, RU864, IN865
Link Budget	137 dB (SF7) to 151 dB (SF12)
RF Transmit Power	14 dB / 20 dB (Region specific)

Device Power Supply	
Battery Type	1 x 3.6V AA Lithium battery (Li-SOCl ₂)
Expected Battery Life	Up to 10 years (Depending on configuration and environment)

Device Logging Function	
Sampling Interval	Configurable via NFC and downlink configuration
Data Upload Interval	Configurable via NFC and downlink configuration

Data types			
Type value	Type	Data size	Comment
0x01	Temperature	2	-3276.5 °C → 3276.5 °C (Value of: 100 → 10.0 µC)
0x02	Humidity	1	0 - 100 %
0x07	VDD (Battery voltage)	2	0-65535mV

EMS lite

Sensors

Temperature

Resolution: 0.1 °C

Accuracy: ± 0.2 °C (See figure 1)

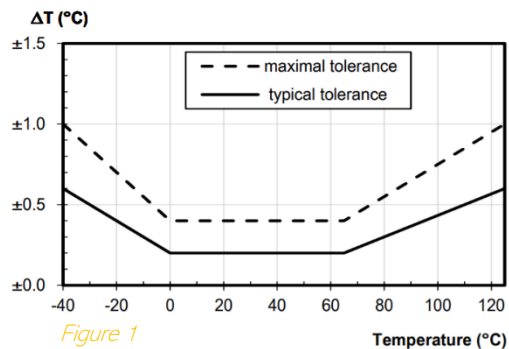


Figure 1

Humidity

Resolution: 0.1 % RH

Accuracy at 25 °C: ± 2 % RH (See figure 2)

Accuracy of humidity over temperature: See figure 3

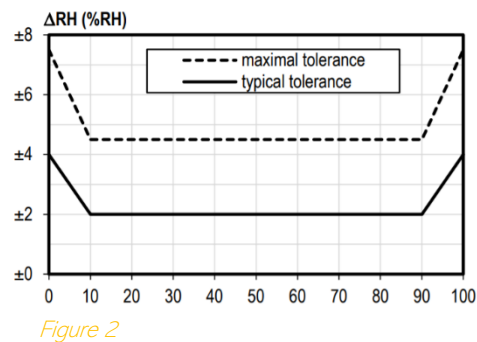


Figure 2

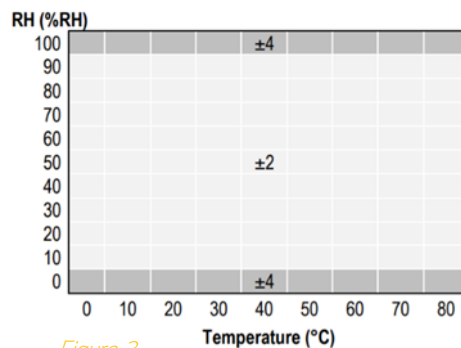


Figure 3